



Heavy or Light we

**CARRY** for you

[www.gdicranes.com](http://www.gdicranes.com)

# Vision

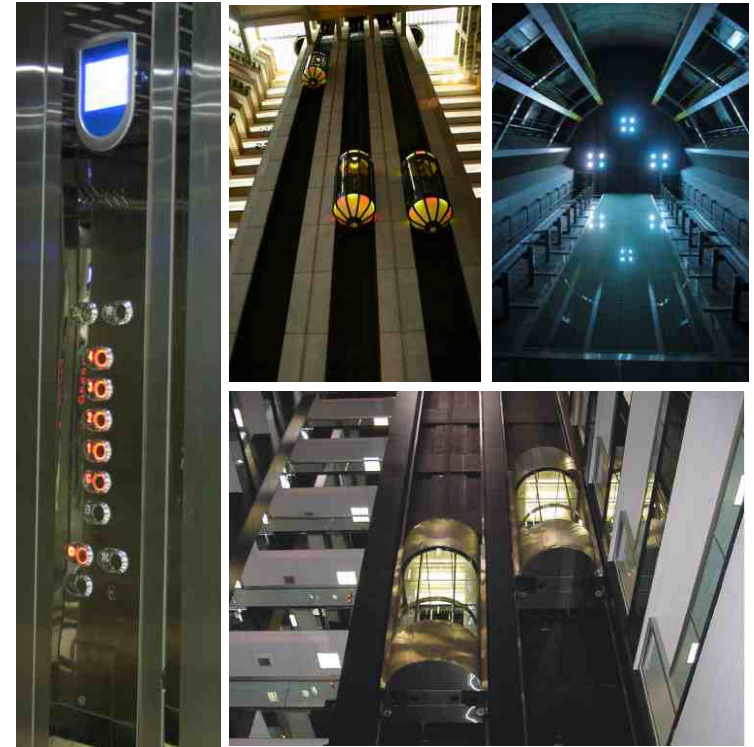
We believe that nothing is more important than a Quality, Operational Excellence and Customer satisfaction, and we promise to you to give you the excellent quality and world class technology.

We are motivated with technological advances and are very keen to adopt the latest technology and designs. The goal is to create the best possible user experience.

We believe in health and safety of our customers, employees and passengers.

We emphasis on our design to give you the high durability, safety, comfort, space, and easy service.

*We are here to serve you with the Big Heart.....*



# Standard Suppliers

**B** **Bharat Bijlee**  
(India)  
Permanent Magnet Synchronous Motors

**IBST**  
We Pursue The Best  
(Shanghai)  
COP - LOP

**Fermator**  
AUTOMATIC DOORS FOR LIFTS  
(Spain)  
Automatic Doors

**mik-el**  
(Turkey)  
MRL Controller Technology

**YASKAWA**  
(Japan)  
Frequency Drives

**MONTEFERRO**  
(Italy)  
Guide Rail Systems

**ADCO** **ADCO CONTROLS**  
(Ahmedabad)  
Controller Technology



# Passenger Lift

**GDI ELEVATORS** offers you right solution for vertical transportation in your building, the world class design and aesthetic appearance demonstrate our superior quality and modern technology. We don't consider elevators, only simple up and down transportation for buildings, we consider it as high tech connotation and charming Integrated outlook for your interior and exterior.

Speed	Low rise: (Up to 6 floors)-0.32 to 1.0 meter/second
	Mid Rise (Up to 12 floors)-0.65 to 1.6 meter/second
	High rise (12 floors & Higher)-1.6 to 2.5 meter/second
Machine	Geared or Gearless - fitted in the Machine Room on I-Beams
Normal Loads	4 Passenger (272 Kgs) to 26 Passenger (1768 Kgs.)
Control Unit	Microprocessor based control unit is fitted in the Machine Room
Drive	Variable Voltage Variable Frequency drive fitted in the control unit with open and closed loop operation
Doors	Automatic Center / Telescopic Doors or Manual Collapsible and Imperforated doors

## Advantages

### Space Optimisation:

With **GDI ELEVATORS**, lift space is no longer very critical that needs to be considered when deciding to install an Elevator with or without Machine Rooms. Space-Optimisation is guaranteed by efficient designs.

### Energy Efficient:

Use of variable frequency drives ensures low consumption of electricity and thus, power saving. Auto light ON & OFF, use of LED lights results in immense saving of power.

### Standardisation:

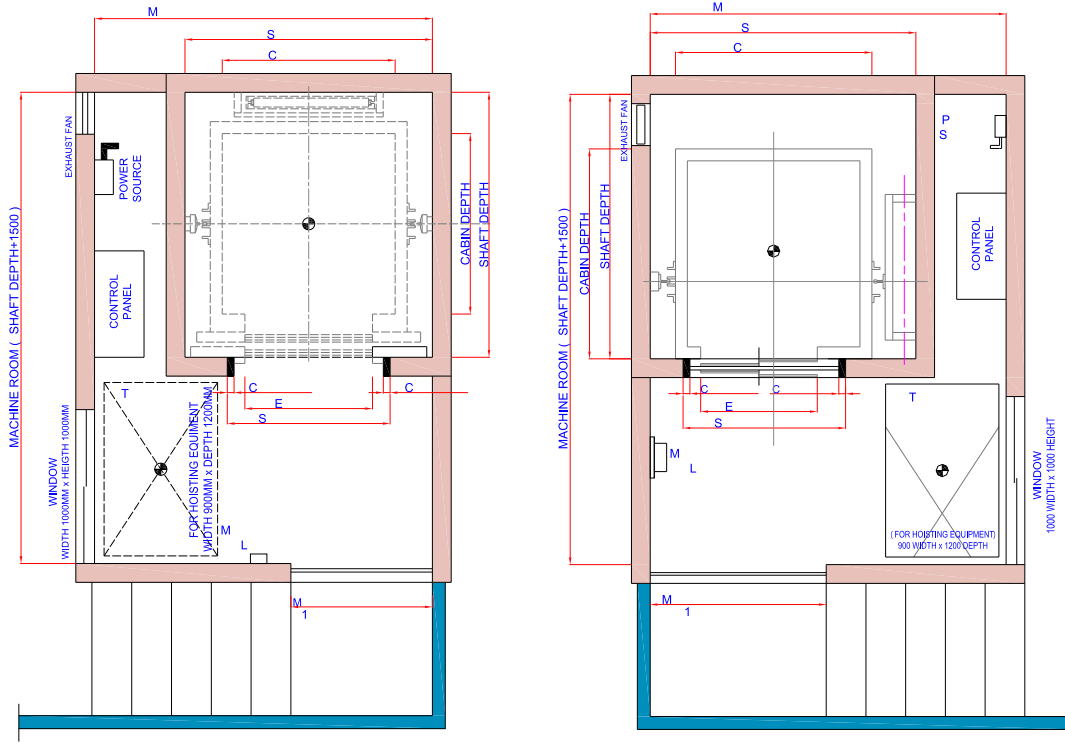
All lifts are designed as per IS Specification & as per the lift directives in force.

### Comfort

Smooth start & stop, good right quality is experienced while travelling in the elevator

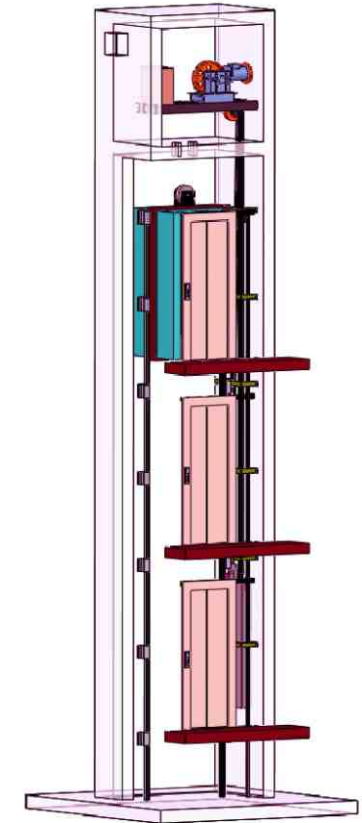
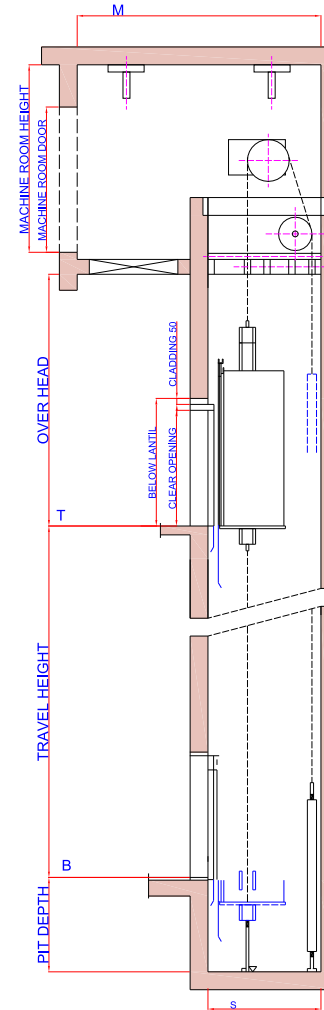
### Automatic Rescue Device(Optional)

In the event of power loss the lift moves to the nearest floor and rest with the doors open till the power is resumed.



**NOTE:**

1. All dimensions are in millimetres.
2. All dimensions are for clear finished lift wells after plastering.
3. All walls minimum 150 RCC or 230 brick (hoist way front wall 230 brick preferred).
4. RCC machine room structural floor slab 150 thick designed to sustain minimum 1000 kg./M UDL.
5. Power supply 400 volts, 3 phase, 4 wires, 50 Hz and 230 volts 1 phase terminating in a MCCB/ECCB switch to be provided by clients.
6. For specific requirements our local representative will be happy to work with you in a preparation of working drawings.



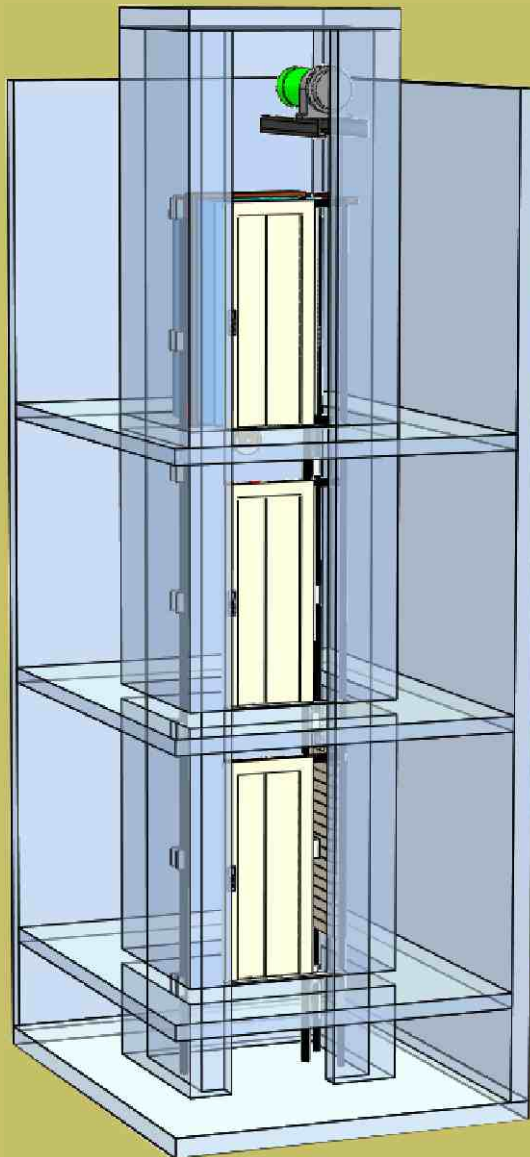
CAPACITY		CAR INSIDE (Center Opening)		LIFT WELL (Center Opening)		CAR INSIDE (Side Opening)		LIFT WELL (Side Opening)		ENTRANCE	SHAFT OPENING
PERSONS	Kgs.	WIDTH	DEPTH	WIDTH	DEPTH	WIDTH	DEPTH	WIDTH	DEPTH	WIDTH	WIDTH
4	272	1000	730	1600	1350	1000	730	1400	1450	700	1040
5	340	1050	870	1600	1500	1000	900	1650	1350	700	1040
6	408	1100	1000	1600	1650	1000	1100	1650	1550	700	1040
		1200	900	1800	1550	1100	1000	1750	1450	800	1140
8	544	1300	1100	1800	1750	1100	1300	1800	1700	800	1140
		1400	1000	1800	1650	1200	1200	1900	1600	800	1140
10	680	1300	1350	1800	2050	1300	1350	2000	1750	800	1140
13	884	2000	1100	2450	1800	1400	1750	2150	2150	900	1240
15	1020	2000	1200	2450	1950	1400	1800	2200	2200	900	1240
16	1088	2000	1300	2450	2050	1500	2000	2300	2400	1000	1340
20	1360	2000	1500	2450	2250	2000	1500	2450	2350	1000	1340

LIFT SPEED METERS/SEC.	PIT DEPTH	OVER HEAD (MINIMUM)	CLEAR (DOOR) OPENING	BELOW LANTIL FROM FINISHED FLOOR LEVEL
0.32 TO 1.0	1600	4300	2000	2260
1.25	1600	4500	2100	2360
1.5	1600	4800	2200	2460

# Machine Room Less Elevators

The Machine Room Less Elevators is the result of technological advancements that often allows a significant reduction in the size of the electric motors, these newly designed Permanent Magnet Motors allow the manufacturers to locate the machines in the hoist way Overhead, thus eliminating the need for a machine room over the hoist way.

This permanent magnet synchronous machine, together with a vector- controlled drive system and regenerative options, provides the highest total efficiency and minimizes both mechanical and electrical losses.

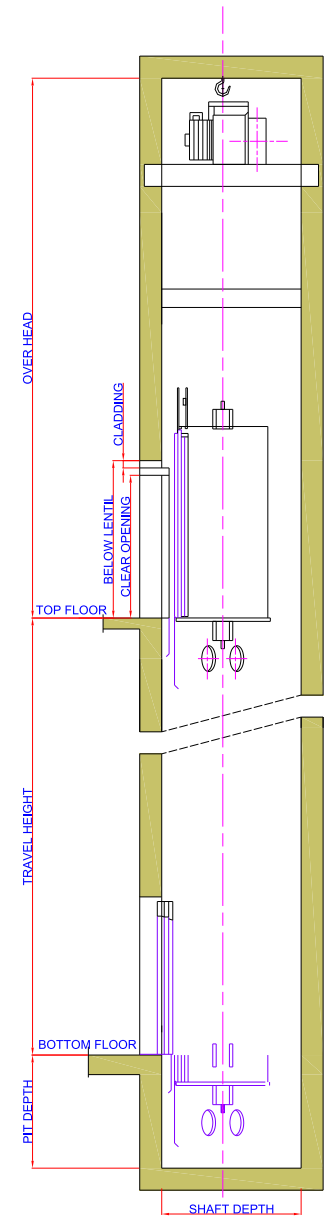
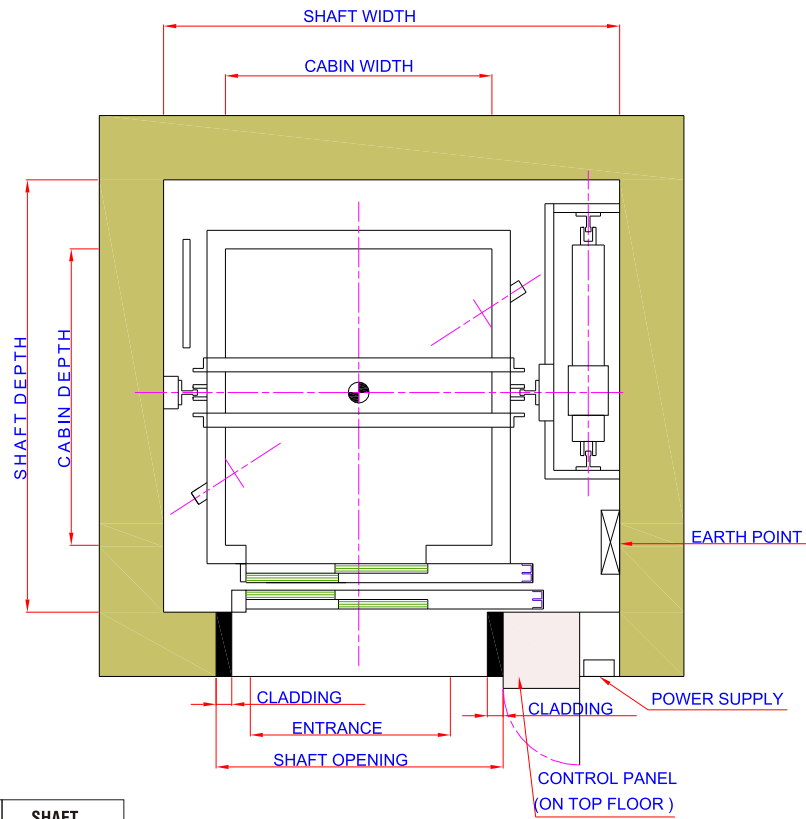


Environment Friendly  
& Energy Efficient

Speed	Low rise: (Up to 6 floors)- 1.0 meter/second
	Mid Rise (Up to 12 floors)-0.65 to 1.6 meter/second
Machine	Permanent Magnet Synchronous Gearless motors are fitted within the shaft overhead
Normal Leads	4 Passenger (272 Kgs.) to 26 Passenger (1769 Kgs.)
Control Unit	Microprocessor based control unit is fitted on the top most floor along with the door frame and recessed in the wall
Drive	Variable Voltage Variable Frequency drive fitted in the control unit
Doors	Automatic Center / Telescopic Doors or Manual collapsible and imperforated doors

## Green Advantage

- Lower power consumption with a gearless Machine and VVVF Drive
- Reducing start up current
- Less heat generation and greater mechanical efficiency of motor as it runs at a low RPM
- It's a Green Elevator for Greener Buildings
- No oil and silent operation, therefore low maintenance and long life cycle
- Closed loop operation is synchronized with an absolute Encoder which enhances efficiency and reliability
- Elevators are equipped with modern fluorescent tubes and LED lights that can last up to 10 times longer and use up to 80% less energy than conventional lighting solutions
- The car fan is turned off when the elevator is not in use



CAPACITY		CAR INSIDE		LIFT WELL		ENTRANCE	SHAFT OPENING
PERSONS	Kgs.	WIDTH	DEPTH	WIDTH	DEPTH	WIDTH	WIDTH
4	272	900	800	1600	1300	700	1040
5	340	1000	900	1700	1350	700	1040
6	408	1000	1100	1750	1500	800	1140
		1100	1000	1850	1450	800	1140
7	476	1200	1050	1950	1550	800	1140
8	544	1100	1300	1850	1700	800	1140
		1200	1200	1950	1600	800	1140
9	612	1200	1350	1950	1750	800	1140
		1250	1300	2000	1700	800	1140
10	680	1300	1350	2050	1750	900	1240
13	884	1400	1750	2200	2150	1000	1340
15	1020	1400	1800	2200	2200	1000	1340
16	1088	1500	2000	2300	2400	1000	1340

**NOTE:**

1. All dimensions are in millimetres.
2. All dimensions are for clear finished lift wells after plastering.
3. All walls minimum 150 RCC or 230 brick (hoist way front wall 230 brick preferred).
4. RCC machine room structural floor slab 150 thick designed to sustain minimum 1000 kg./M UDL.
5. Power supply 400 volts, 3 phase, 4 wires, 50 Hz and 230 volts 1 phase terminating in a MCCB/ECCB switch to be provided by clients.
6. For specific requirements our local representative will be happy to work with you in a preparation of working drawings.

LIFT SPEED METERS/SEC.	PIT DEPTH	OVER HEAD (MINIMUM)	CLEAR (DOOR) OPENING	BELOW LENTIL FROM FINISHED FLOOR LEVEL
0.65 TO 1.0	1600	4300	2000	2260
1.25	1600	4500	2100	2360
1.5	1600	4800	2200	2460



# Type of doors

## ■ Glass Doors



## ■ Telescopic Opening Doors



## ■ Center Opening Doors



## ■ Collapsible Doors



## Ceilings



## COP



## Hand rails



## Excellent service around the clock

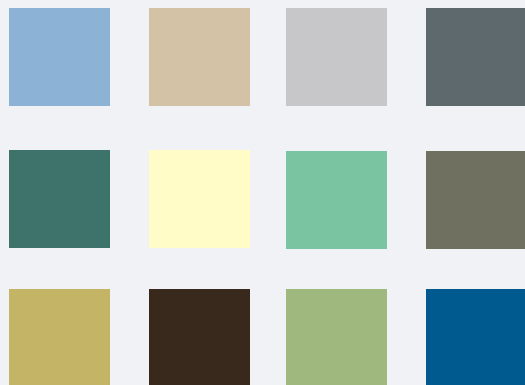
**GDI ELEVATORS** not only manufactures state-of-the-art products, but also offer all after sale services and support associated with them. In addition to this most prompt & efficient after sales service wing has been working round the clock along with readily availability of spares of equipment as well as comprehensive maintenance contract. **GDI ELEVATORS** has very wide network for maintenance services, modernizations and spare parts. Our Maintenance services covers all activities, necessary for trouble-free operation





Mild Steel Powder Coated Finish

Walls- Mild Steel powder coated panels with either single or double colors	Flooring- Laminated PVC flooring with ceramic finish
Corners- Stainless Steel (Hairline Finish)	Hand Rail- Stainless Steel
Ceiling- Mild Steel Powder coated with center design.	Lighting - 4 No White LED down lighters



# GDI

## ELEVATORS

AN ISO 9001:2008 CERTIFIED COMPANY



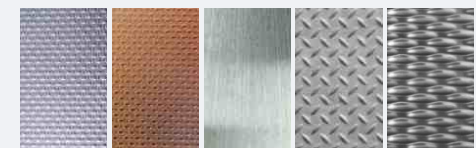
Club - Exotica

Walls- Vertical Wooden Panels with Stainless Steel Strips	Flooring- Laminated PVC flooring with ceramic finish
Corners- Stainless Steel (Mirror Finish)	Hand Rail- Wood/Stainless Steel
Ceiling- Stainless Steel Hairline or Stainless Steel Mirror Finish	Lighting - 4 No Led warm white down lighters



Stainless Steel

Walls- Stainless Steel Hairline Finish (304 grade)	Flooring- Laminated PVC flooring with ceramic finish.
Corners- Stainless Steel (Mirror Finish)	Hand Rail- Stainless Steel
Ceiling- Stainless Steel Hairline	Lighting - 4 No LED lights warm white





You can trust....

**GDI**  
ELEVATORS

Plot No. 10546, Lane No. 9, Partap Nagar,  
Bhagwan Chowk, Ludhiana, Punjab, INDIA  
Mobile: +91 99142 11197, 98146 26197  
Email: [info@gdicranes.com](mailto:info@gdicranes.com)  
Website: [www.gdigranes.com](http://www.gdigranes.com)